

QUARTZITE SOLUTION AND RECOMMENDATIONS GUIDE

WHAT IS QUARTZITE?



Quartzite is a hard metamorphic rock. Formed when silica-rich sandstone is subjected to enormous heat and pressure in the earth's crust. Unlike marble, which is mainly formed of calcite, this rock type is quartz based, therefore it is tougher and more resistant to stains, acids, and abrasion. Quartzite is one of the hardest natural materials used in the stone industry. Quartzite has a Mohs hardness rating of 7.

Characteristics of Quartzite:

- Quartzite is a porous material and needs to be regularly sealed.
- It often has veining that creates unique patterns.
- UV resistant, can also be used outdoors.
- Very hot objects can burn Quartzite and leave a stain.
- Moderately resistant to scratching, however, cutting board use is still advised.

When quartzite is properly handled, fabricated, and installed, it is one of the hardest natural stones you can use, and it will give you many years of quality use. However, light to grey quartzites can pose some issues. The guidelines below are a collection of hands-on experiences and information shared throughout the Natural Stone Industry.

Pellegrino Stone Care disclaims all liability and does not accept any responsibility for any loss which may arise from reliance on information contained on this site.

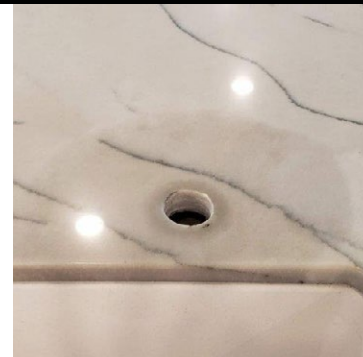
The materials contained on this website are provided for general information purposes only and do not constitute professional advice on any subject matter.

It is recommended to wear rubber gloves and eye protection and to test a small area first.

QUARTZITE STAIN REMOVAL GUIDE

Use the following guidelines for the removal of stains, including **Water**, **Oil**, **Adhesives**, **Iron** and **Organic**.

WATER STAINS



Step 1:

Mix a combination of baking soda with acetone to create a paste with the consistency of pancake batter.

Step 2.

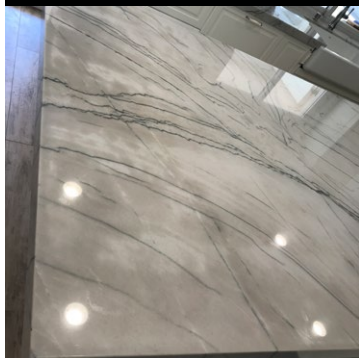
Pour directly on the stained area. Ensure this mixture overlaps the stained area by ½ inch. For vertical surfaces mix to a thicker consistency, cover with plastic and secure with blue masking tape.

Step 3.

Allow to sit for 12 hours, after this period of time, remove paste mixture, and repeat as needed. This process may take several applications for complete removal of stain.

Note: It's important to dry the quartzite. See instructions below.

OIL STAINS



Option 1

Step 1:

Mix a combination of baking soda with acetone to create a paste with the consistency of pancake batter.

Step 2.

Pour directly on the stained area. Ensure this mixture overlaps the stained area by ½ inch. For vertical surfaces mix to a thicker consistency, cover with plastic and secure with blue masking tape.

Step 3.

Allow to sit for 12 hours, after this period of time, remove paste mixture, and repeat as needed. This process may take several applications for complete removal of stain.

Option 2

Step 1.

Clean the surface with stone specific cleaner such as [Granite Gold Daily Cleaner](#), dish soap, alcohol, or acetone.

Step 2.

Place [Mangia Machia](#) or [Dr. Fred's Stain Remover](#) on stain as per product instructions and allow to sit for 12 hours. Remove and discard. If stain is on a vertical surface cover the [Mangia Machia](#) or [Dr. Fred's Stain Remover](#) with plastic. Use blue tape to secure the edges and corners.

Step 3.

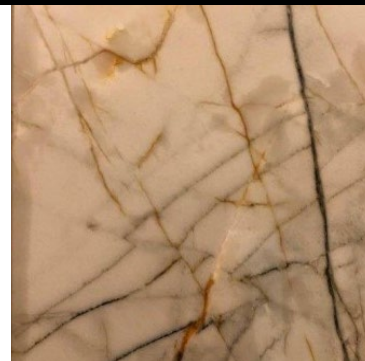
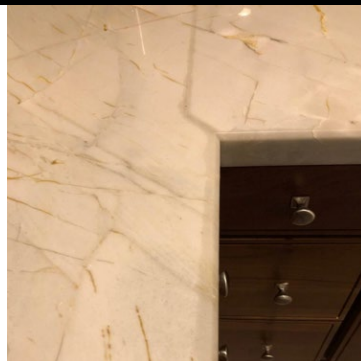
Remove [Mangia Machia](#) or [Dr. Fred's Stain Remover](#) with plastic spatula and remove any residual paste with a damp cloth or damp paper towel. If [Mangia Machia](#) or [Dr. Fred's Stain Remover](#) is successful, rinse with water, allow to dry, and seal the stone.

Step 4.

Treat any remaining discoloration by pouring [Salon Care #40](#) over the stained area, ensure to overlap the stained area by ½ inch. If the stain is on a vertical surface. Soak a paper towel in [Salon Care #40](#) and place on stain and cover with plastic. Use blue tape to secure the edges and corners. Allow to sit on the surface for 1 hour, remove with paper towel. Wipe with damp cloth or paper towel.

ADHESIVE STAINS

This includes **Glue, Epoxy, Resins, Sealer, Plumbers' Putty, Latex, Silicone, and Synthetic Stains:**



Pour and wipe Lacquer thinner, Acetone or Goof Off on each area multiple times. The goal is keep the stain wet with any one of these solvents to break down the adhesives. If after 10 applications there is little or no improvement, you will need to apply a poultice.

Poultice application for Adhesives:

Step 1:

Mix a combination of baking soda with acetone or Goof OFF to create a paste with the consistency of pancake batter.

Step 2.

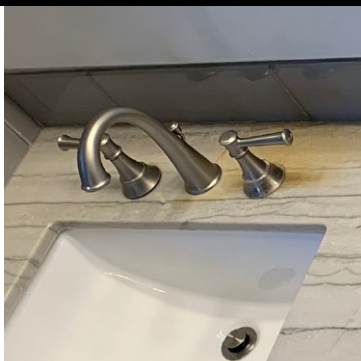
Pour directly on the stained area. Ensure this mixture overlaps the stained area by $\frac{1}{2}$ inch. Cover with plastic. For vertical surfaces mix to a thicker consistency, cover with plastic and secure with blue masking tape.

Step 3.

Allow to sit for 12 hours, remove paste mixture, and repeat as needed. May take several applications for complete removal.

Note: It's important to dry the quartzite. See instructions below.

IRON STAINS



Step 1:

Pour and wipe Lacquer thinner, Acetone or Goof Off on each area multiple times. The goal is keep the stain wet with any one of these solvents to break down any sealer that will inhibit extraction.

Step 2 :

Pour Salon Care #40 over the stained area. Be sure it overlaps the stain approximately one-half inch. If the stain is on a vertical surface. Soak a paper towel in Salon Care #40 and place on stain and cover with plastic. Use blue tape to secure the edges and corners.

Step 3:

Allow to sit on the surface for 1 to 4 hours.

Step 4:

Remove and discard paper towel. Wipe with damp cloth or paper towel. Rise with water. You have to repeat this several times.

Additional Recommendation:

Use as directed . If [RSR 2000](#) leaves a purple stain use Solon Care and place it on the stain, allow to site for 10 min, remove and rise with water.



Note: It's important to dry the quartzite. See instructions below.

ORGANIC STAINS

Step 1:
Pour and wipe Lacquer thinner, Acetone or Goof Off on each area multiple times. The goal is keep the stain wet with any one of these solvents to break down any sealer that will inhibit extraction.

Step 2 :
Pour Salon Care #40 over the stained area. Be sure it overlaps the stain approximately one-half inch. If the stain is on a vertical surface. Soak a paper towel in Salon Care #40 and place on stain and cover with plastic. Use blue tape to secure the edges and corners.

Step 3:
Allow to sit on the surface for 1 to 4 hours.

Step 4:
Remove and discard paper towel. Wipe with damp cloth or paper towel. Rise with water. You have to repeat this several times.



Note: It's important to dry the quartzite. See instructions below.

DRYING QUARTZITE

Heat lamp use instructions

It is important to position the heat lamp or Painter Light approximately 16" up to 24" inches away from the stained areas. Set a timer to run for 1 hour on then 30 minutes off cycle to allow for a cool down period. This will prevent the stone from getting too hot and will accelerate the wicking effect. Do not allow the stone surface to heat up to the point where the surface feels hot to the touch. Keep the surface at a warm temperature.



FABRICATION & SEALING RECOMMENDATIONS

- After slabs are cut clean each piece with Deionized Water. This will clean the stone and stabilize any impurities.
- Allow each piece to thoroughly dry.
- Start Fabrication Process: Be sure your adhesives do not wick or travel into the stone. Best to test the suitability of your adhesive prior to fabrication.
- Once slabs are fabricated allow to cure for 24 hours the seal each piece on all sides. Evenly apply 3 to 4 coats (point of rejection) of Dry Treat Waterborne to all sides of each piece. This includes front, back, edges, aprons, returns and inside edges to be joined with additional slabs.
- **Time of Installation:** Although the back of the slabs is sealed, using the proper adhesive will insure a superior bond. In many cases the adhesive will bond to the factory mesh, the back of the stone has some texture for a better grip and the sheer weight of the stone will help with a proper install.
- **Completion of Installation:** Completion of Installation: Once the job is completely installed be sure all glues, adhesives and caulking are fully cured, thoroughly clean the stone, and apply 3 to 4 coats of Dry Treat Dense Stone Impregnator. Be sure to seal all edges

QUARTZITE CARE GUIDE

It is important to seal Quartzite every 12 to 24 months and use a stone specific care product line. We recommend using [Granite Gold Daily Cleaner, Sealer and Polish](#).

